

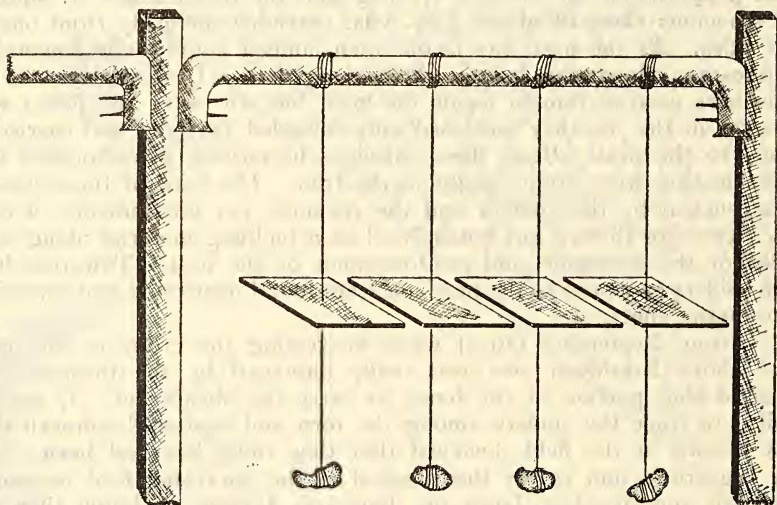
very much smaller than the original one. Although this shift was a forced one and did cost the spiders their original shelter and other possessions, the new premises were by no means less advantageous to them as the tree had just commenced flowering and bees and flies were hovering over the blossoms.

c/o THE CEMENT MARKETING CO. OF INDIA LTD.,
 No. 1, QUEENS ROAD, FORT, T. V. SUBRAHMANYAM, B.A.
 BOMBAY-I,
 October 20, 1952.

27. A NOTE ON THE EFFECT OF LIGHT AND THE
 COLOUR OF THE SUBSTRATUM ON THE SETTLEMENT
 OF BARNACLES¹

(With a text figure and a plate)

The probable effect of light on the settlement of barnacles has been a battlefield of conflicting theories. Studies on the effect of the surface angle and of light on the attachment of *Balanus eburneus* have revealed that the photic character is of primary importance.

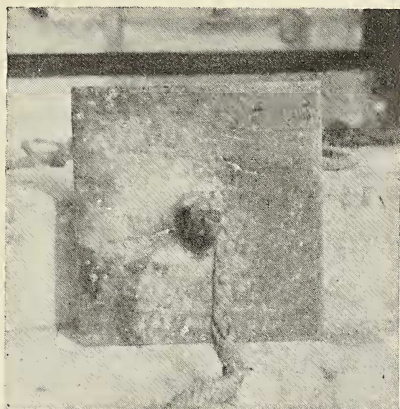


TEXT FIG. 1

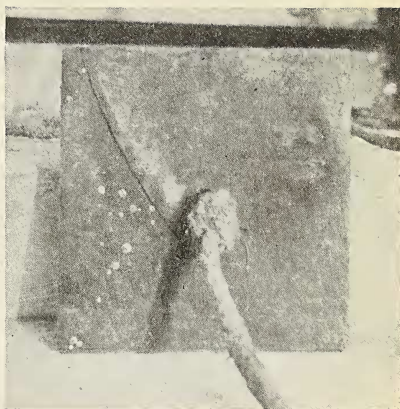
Showing the arrangement of the blocks in the sea

(1) While some workers (2, 3, 4 & 5) have found that barnacles 'react negatively to light at the time of attachment', various others (6, 7 & 8)

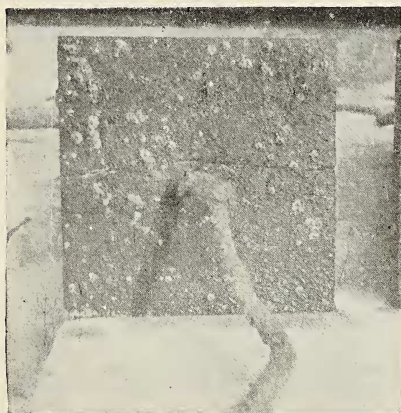
¹ Contribution from the Marine Biological Station, Krusadai Island, Pamban, Gulf of Manaar. Published with the kind permission of the Director of Fisheries, Madras.



1. Block with white paint



2. Block without paint



3. Block with red paint



4. Block with black paint

